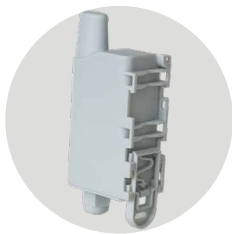
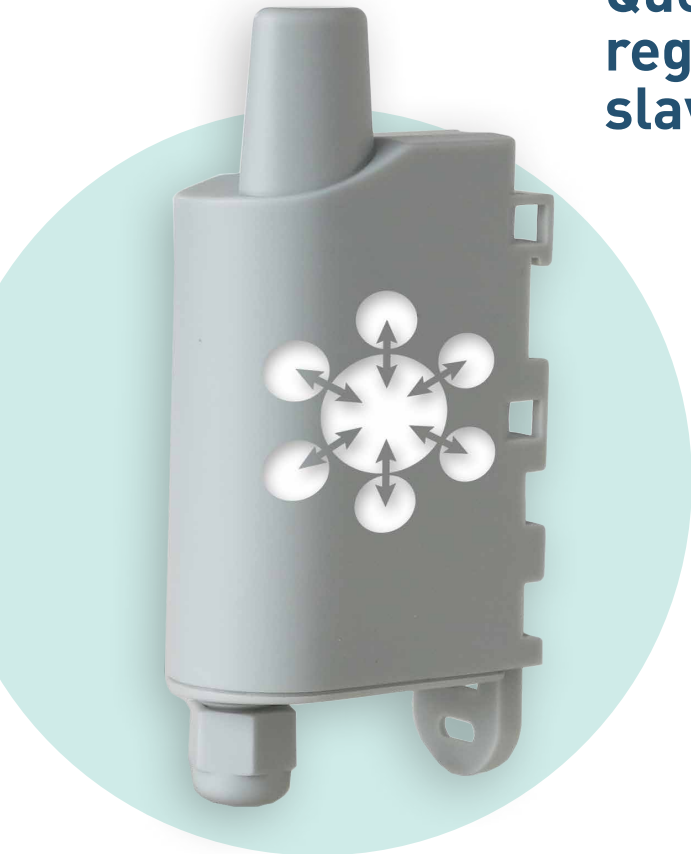


MODBUS 2

Query, write and read one or more registers on one or more Modbus slaves



ALERT

- Provide feedback about faults and alerts from Modbus slaves



MEASURE

- Provide feedback about measuring data from Modbus slaves



ACT

- Reading a slave's registers from the network
- Write to a slave's registry from the network

BENEFITS

- RS485/RS232 compatible
- Supervision of up to 20 slaves
- Several periodic frames with different frequencies
- Indicator lights for installation assistance
- Control and supply of power to the sensor
- Local and remote configuration

FUNCTION

Modbus interface



PRODUCT USES



Make your thermal energy meters communicate.



Broadcast information on PLC.

TECHNICAL SPECIFICATIONS

- Periodic modes or event-based modes
 - 6 configurable periodic frames
 - 6-30V external power supply
 - Dimensions: 105 x 50 x 27 mm
 - Casing: IP67 (IP68 on request)
- Integrated fastening system: DIN rail, tube, wall, flange
 - Configurable Life Screen
- Product error alert, configuration error, low battery
- Modbus specific help in the IoT Configurator
 - Zone: LoRaWAN: US902-928 - AS923
- Operating temperature range: -25°C / +70°C
 - Weight: 70g
 - Standards:
 - AUS/NZ: IEC 62368-1(safety) / AS/NZS 4268:2012
 - US: FCC- Title 47 CFR Part 15
 - CANADA: RSS-247 Issue 2

